



WARRINGAL CONSERVATION SOCIETY

High Summer Newsletter

Volume 48/one

Jan/Feb 2018

Warringal Conservation Society is a local, not-for-profit, community organisation caring for the environment in Banyule.

Formed in 1970, the Society is an active and productive steward of Banyule's environmental heritage.

Join us!!

Warringal Conservation Society is not just a local environment group: it is stimulating, fun and companionable and takes an active role in the wider community.

Single \$15,
Family \$20
Pension/student/
unemployed \$10
Life \$150

Articles and photographs for the newsletter are welcome. We may edit for legal, space or other reasons. Opinions expressed in articles are not necessarily those of the Warringal Conservation Society.

Newsletter printed courtesy of Jenny Macklin MP.

FEBRUARY MEETING

First Meeting of the year picnic style dinner 6.15pm

The February meeting will be preceded by a picnic style dinner so that everyone can catch up after the holiday break. Dinner will be provided by the Committee from 6.15pm. A donation of \$5 kids, \$10 adults is invited to subsidise operating costs and the Warringal Prize. Fruit juice & soft drink provided, BYO beer & wine. Meeting follows at 7.30pm.

Andrew Kelly - Yarra River Keepers

Andrew is the Yarra River Keeper. The Yarra River Keeper Association speaks for the Yarra, Melbourne's own beautiful, resilient, iconic River. In Andrew's words "we advocate for the River: for green spaces, for water quality, for biodiversity, for the birds, animals, insects and reptiles along the River, for good planning decisions, for the tributaries, for the parklands, for appropriate recreation; and for an understanding of our river and its role in the life of the city of Melbourne. We lobby governments and we educate the community. We tell the story of the River."

Andrew will speak about the new Yarra River Protection Act.

See: <http://yarrariver.org.au/>

**Meetings on first Thursday of the month*
from 7.30 pm at the Old Shire Offices,
60 Beverley Road.**

**(*picnic dinner from 6:15pm before Feb meeting)
Enter from Buckingham Drive near the Banyule Theatre and
Greening Australia. Melways map 32:D3. All Welcome**

AT A GLANCE

February

Thursday 1st: Picnic dinner 6.15pm, (\$10 Adults, \$5 Children).

General meeting at 7.30pm - Yarra River Keeper

Saturday 10th: Twilight Nature walk at Banyule Flats (See news and Events)

Thurs 15th: Special meeting for WCS members- North East Link - Process for the Environmental assessment and protection of corridor A (See news and Events)

News & Events

Twilight walk – Saturday 10th February

WCS usually start the year with a twilight walk but this year we thought it would be a nice to start with a bit of bird watching at the Banyule Swamp as the birds return home. Then head off on the walk, guided by George, one of our very well informed and observant members. People are welcome to come to either or both parts of the event.

Date: Saturday 10 February 2018

Meeting location: Somerset Drive car park, (Melway ref: 32:F2). Time to meet: 7.30pm.

PART 1: We will walk over the Banyule swamp, sit quietly and watch the birds come in. At 8pm, we will make our way back to Somerset car park, and meet any newcomers.

PART 2: 8.15pm we will go on our twilight walk. Duration: about 1 ½ hours – back at the car park by 10pm. Participants will need to be very quiet to ensure best spotting conditions and we will be going into zones where dogs are not permitted. If you decide to bring a torch, make sure it has a red lens or cover so there is minimal disturbance to creatures or damage to their night vision. Insect repellent and sensible shoes recommended.

Call Heather if you have any queries 0423 191 977.

North East Link – Processes for the Environmental assessment and protection of corridor A - Thurs 15th February

This is an additional Special meeting for WCS members only.

The Environmental team members from the North East Link Authority will provide us with an explanation of their role and the processes involved with preparation, public review, and ministerial assessment of an 'Environmental Effects Statement'

in accordance with the Environmental Effects Act 1978. The team will also explain the actions which can be taken to avoid or at least minimise environmental impact during construction and future operation of the NEL. Our intention is that this will be a respectful exchange of information, and will not be used as an opportunity to protest or critique NELA actions or decisions. Thursday 15 February 2018, 7.30pm at the Old Shire Offices.

North East Link Environment Protection and Biodiversity Conservation Act Referral Released

The North East Link EPBC referral to the federal government is open for public comment until 2nd Feb. WCS and Friends of Banyule are preparing responses. The report is a large document with many attachments. Important points to note include the loss of habitat supporting 84 endangered Matted Flax-lilies in the Simpson Barracks (see pg 9 of newsletter), the potential to change the hydrology of Banyule Flats, and details of the project area in attached maps.

To see the report and attachments, find project 2018/8142 at

<http://epbcnotices.environment.gov.au/invitations/>

Say 'NO' to Corridor A

Show your disapproval of the development of toll-ways instead of public transport and display a 'No Freeway' sign at your house or business. Available at a meeting or by contacting the Committee at warringal3084@gmail.com.au. \$10.00



Who we are and how to contact us

Warringal Conservation Society Inc

PO Box 64 Rosanna 3084

Email: warringal3084@gmail.com

Web: www.warringal.org.au

www.facebook.com/WarringalConservationSociety

President: Daphne Hards

Telephone: 9497 4831

Vice President: James Deane

Telephone: 94585985

Treasurer: Daphne Hards

Telephone: 9497 4831

Newsletter

Editors: James Deane & Gianna Romano

Telephone: 94585985

Email: wcs.editor@gmail.com

Compilation & Mailing: Margaret Pollock, Heather Smith, Don Stokes

Planting Coordinator: Heather Smith

Committee: Anthea Fleming, Celia Smith, Daphne Hards, Dianne Williamson, Doug McNaughton, James Deane, Don Stokes, Michelle Giovas.

News & Events cont.

"Roads to nowhere" Letter to the Age

WCS member and Friends of Banyule President Dennis O'Connell had a letter published in the Age on Jan 14th. Dennis' letter was in response to an article by planning expert William McDougall on transport policy ("Our ridiculous frenzy of road construction will swallow up resources for two decades").

"William McDougall's article ("Roads to nowhere", The Sunday Age, 7/1) is spot on. As a senior advisor to governments on both sides of politics over many years, he is well placed to point out the tawdry history of transport policy by governments often making this up on the run, with the next election and big announcement in mind. Meanwhile they are pandering to the transport lobby and toll road providers. This is clearly the case with West Gate Tunnel and will extend to other projects.

The release of the \$6.7 billion West Gate Tunnel contract on the last business day of the year, demonstrates how public scrutiny is being avoided. At 1500 pages it is a complex, obfuscating and heavily redacted document giving Transurban a green light to milk Melbourne motorists for several more decades, reaping massive profits in the process. As pointed out, tolls will be extended ultimately to other major motorways. This would include the Eastern Freeway, as part of the government's \$16.5 billion proposed North East Link option A, connecting to the M80 not as a ring road but a toll road, all the way to EastLink.

As the author rightly points out, if we don't seriously address public transport, we'll simply be generating further congestion and be back in the same gridlocked position we're currently in at present. We can't toll our way out of congestion which is precisely where we're headed with such short-sighted transport policy and lack of foresight. "

Dennis O'Connell, Ivanhoe

November 2017 field trip: Westgate park

What a glorious day we had for our trip to Westgate Park. Tony Flude, Vice President of Friends of West Gate Park (FoWGP), welcomed us with morning tea and the interesting backstory of the park.

Covering 40 hectares, the park has vegetation in ten distinct planting groups, fresh and saltwater lakes, (the salt lake famously pink when pollution levels are right), lagoons and ponds and three walking trails through the parklands. Created in 1985, the park sat neglected until the formation of the Friends group in 1999. It now boasts an amazing



Westgate Park. Top: Tony Flude taking us on a guided walk. Middle: The main lake. Bottom left: A Bulbine Lily. Bottom right: Pigface flower.

number of bird species, insects (105 species observed at last count), snakes, lizards and over 60 species of fungi. Monthly surveys record an average of 50 bird species and 175 bird species have visited the park since 2007. Foxes take their toll (two cygnets had just been taken) but the rabbit baiting has been very successful. Over **260,000 plants**, made up of 300 plus locally indigenous species, have been planted. In 2010 they won the prestigious Urban Landcare Award for their work.

Tony led the group on a ramble starting at the the FoWGP nursery where 30 per cent of their own plants are propagated, with the rest coming from

News & Events cont.

SKINK Indigenous nursery in St Kilda. The group has worked to ensure the survival of locally indigenous species by propagating and growing a number of those that are rare, threatened or vulnerable.

Nearby, water runoff from the neighbouring (News Limited) property is harvested down into the park through a chain of small wetlands. The use of thickly applied mulch (supplied free from a local contractor) keeps the weeds down.

As we walked along the west boundary, Tony explained that between 2003-16 six parcels of land totalling 7.8 hectares have been added to the Park thanks to advocacy by the Friends group. Areas of the site are still polluted due to its industrial history. The EPA are presently running a project that involves pumping vegetable oil down into the ground water. Apparently the vegetable oil will collect any impurities which will then be filtered out - returning the ground water to a potable state.

We pass a couple of dense, established Casurina groves - unfortunately the wrong species for this area. To stop them from spreading a rubber barrier about 600mm wide has been dug into the ground to stop the trees spreading.

As we walk along the eastern boundary, under the bridge, towards the Yarra we come across the most recent earthworks where slopes are being shaped to catch any runoff. Upstream the more established channels are filled with club sedge. The ground here was covered thickly with weeds and invasive scrub. Contractors Bartlett Earthmovers have worked painstakingly among the various electrical cables and water and sewerage pipelines to build the new drainage lines. This part of the park shares a boundary with the Melbourne Port Authority and the Friends hope that runoff from the Authority's land can also be channelled into the park.

As we walked we saw large areas of flowering Native Pigface (*Carpobrotus rossii*) between the hardy salt bush, covering the mulch along the bike path. And delightfully extravagant spreads of Native Buttercup (*Ranunculus lappaceus*), starting from just a handful of tubes.

After passing Melbourne Water's aeration tank station over the Hobson's Bay main sewer we reached the Yarra, and across the water we see the Scienceworks Museum. We ended our walk at the punt that takes people and bikes across to Scienceworks and the Western suburbs. Our driver met us with the bus to take us back up into the park where we said goodbye to Tony and enjoyed our picnic lunches. After a bit of bird watching

(including swans with the remaining two cygnets) we drove via Sandridge Beach for an ice cream and paddle before heading home.

Thanks to Banyule Bush Management for supplying the bus, to our driver Sam and to Tony for very generously sharing his time and extensive knowledge with us.

Heather Smith (WCS Planting Coordinator)

November 2017 Viewbank Primary School Grade 1 field trip to Banyule Flats

On 3rd of Nov last year about 80 grade 1 students from Viewbank Primary School explored Banyule Flats. Student studied waterbugs, did some bird watching, and looked into nest boxes using a wildlife camera. WCS members Anthea Fleming, Celia Smith and James Deane introduced students to the history of Banyule Flats and finished by pointing out a Tawny Frogmouth sitting on a nest. Many of the students had never been to Banyule Flats before and will hopefully ask their parents to take them back.

Bolin Bolin Billabong rewatering

On Wednesday 25th October, at the invitation of The Wurundjeri Council, Dianne, Celia and Doug attended an event at the South West end of Bolin Bolin billabong. In order to protect and maintain the billabongs ecological and cultural values, the Wurundjeri Council in partnership with Melbourne Water delivered environmental water to the site to mimic what would naturally occur and trial how a more permanent watering solution might be provided for Bolin Bolin.

Bolin Bolin billabong, which was geologically formed around 900 years ago, is a highly significant site for the Wurundjeri people, the Traditional Owners of Melbourne and surrounding territories. Bolin Bolin means "the place of many lagoons" in Woi-wurrung, the traditional language of the Wurundjeri people. The site forms part of a



News & Events cont.

much larger cultural landscape which comprises both tangible and intangible cultural values. Prior to contact, and for a few years post contact, when the billabong started its annual drying phase, hundreds of people would gather at Bolin Bolin to harvest eels. Bolin Bolin had such a plentiful eel population, that it was able to sustain these large gatherings for 8 - 12 weeks at a time.

The billabong is currently under threat due to a range of issues, predominantly human impacts associated with urban development which have fundamentally changed the quantity and quality of water Bolin Bolin receives. While the billabong fills periodically from high flows from the Yarra River (Birrarung), changes to river flows over many years (dams for flood mitigation, dams for domestic supply certainty) have reduced how frequently Bolin Bolin fills. This means that the billabong doesn't receive the watering it needs to support the native vegetation and animal species resident here. There is hope that the nearly completed runoff water filtration ponds fed from the local schools and properties can add support to the continuing flood cycles of the wetland.

Doug McNaughton

Note: 3rd Dec 2017. Heavy rain caused the Yarra to flood Bolin Bolin . Photo below by Daphne Hards.



Heidelberg Theatre Company WCS fundraiser

We will be selling discounted tickets (\$20) to productions by the Heidelberg Theatre. All shows are on a Wednesday at 8pm (may be subject to change). Proceeds go to fund WCS operating costs. Contact Doug McNaughton for more details and tickets (edinburgh48@optusnet.com.au).

Feb 21st "Crossing Delancey" by Susan Sandler.

Directed by Llaaneath Poor

May 2nd "The House of Bernarda Alba" by Federico Lorca. Translated by David Hare

directed by Joan Moriarty

July 11th "Private Lives" by Noel Coward. Directed by Karen Wakeham

Sep 12th "Blue Stockings" by Jessica Swale.

Directed by Natasha Boyd

Nov 21st "Inheritance" by Hannie Rayson. Directed by Tim Scott.

Who Remembers Keith Hollywell?

Everyone knows that Doug Western was our Founder and first President of WCS – but when he became ill and was forced to resign in 1971, his place was filled by Keith Hollywell. Keith remained as WCS President until 1982, and I believe that without him, and of course Reg Johnson, the Society's survival and early achievements could not have been achieved.

During his time, the Yarra Valley Study Group's early plans for Banyule Flats were put into action, and the Plant List and the Register of Heidelberg's Environmental Assets were published. Finally came the publication of the The Birds of Heidelberg and the Yarra Valley in late 1981, after years of work by a devoted committee steered by Keith. Nor must his wife Pat's contributions be forgotten.

I am compiling a History of Warringal Conservation Society – hopefully in time for our 50th Anniversary in 2020-21. I did not join myself until 1977, and there is much I do not know about our early days. I understand that Keith may have worked for the CSIRO, but he lost this job in the late 70s . In 1982, he obtained a position in the Latrobe Valley – I believe as Principal of a TAFE . If any of our members or readers can supply any more detail of Keith and our other early members, I should be very pleased to know. Please email warringal3084@gmail.com with any information.



Anthea Fleming

Keith Hollywell at a 1981 WCS working bee

Welcome to new WCS members:

Geoff Lacey

Emma Coates

Duck Shooting Season 2018

WCS has received an email to say that the Government will allow a duck hunting season in Victoria in 2018, commencing on Saturday March 17th. With their permission, WCS is printing below the edited information from an email sent by the Coalition Against Duck Shooting. Other information will go up on the WCS website as it comes in during the next few months. Please contact info@duck.com.au about registration as a volunteer rescuer and attendance at information meetings for rescuers in early March. Volunteer roles include many on-shore jobs. You do not have to go into the water. Even your attendance as an observer, someone who witnesses what goes on, is very valuable.

Celia Smith

Sadly, a 3-month recreational duck shooting season, commencing March 17, has been announced today (see media release that follows)

Please keep this date free so you can join our rescue team.

If rescuers had not been present at The Marshes, near Kerang, for the opening of the duck shooting season last year, no one would have known about the 1,500 waterbirds we recovered (including 296 protected species and 183 threatened waterbirds). Other massacres, which we didn't hear about until years later, had all been hushed up. But because of our media and the 7.30 Program (thanks to Animals Australia) the government was made fully aware of The Marshes travesty and are now looking at ways to prevent a similar massacre taking place again this year. The government has put the shooters on notice.

The superb work done by the rescue team in 2017 meant the government couldn't ignore the massacre. Two of the most senior Field & Game Australia managers were forced, or pushed, to resign. The government hired Pegasus Economics (a Canberra based audit firm) to review the workings of the Game Management Authority (GMA) because of its failure to stop the early shooting and the massacre. The shooters have been put on notice. The report (yet to be released) is damning of the GMA. The government knows that it cannot control the shooters on the wetlands and it is imperative that we put as much pressure on the shooters this year as possible.

We have already started surveying wetlands in northwest Victoria to locate threatened species.

Laurie, Lynn and Dave (Coalition Against Duck Shooting)

Occupational Health and Safety regulations protect illegal duck shooters from prosecution

By announcing a recreational duck shooting season for 2018, the Andrews government is rewarding shooters for their appalling behaviour last year at the Koorangie Marshes (a RAMSAR wetland of international importance) where protected and threatened waterbirds were massacred.

Campaign Director Laurie Levy today said: "The violence and cruelty duck shooters inflict on native waterbirds is barbaric and unacceptable in a civilised society, yet Minister Pulford now recognises that animals are sentient beings who suffer and feel pain. "It's extremely difficult for the Government to prosecute duck shooters as Game Management Authority (GMA) compliance officers cannot enter the water due to Occupational Health and Safety regulations. GMA compliance officers are forced to stand flat-footed on shore, unable to see the illegal shooting of protected and threatened species out in the middle of a wetland.

"Compliance officers cannot approach and question armed duck shooters on shore, unless accompanied by armed police officers.

"The GMA has only five compliance officers to cover some 20,000 wetlands, rivers, streams and private property in Victoria during the three-month duck shooting season. This is similar to Victoria police only having five officers to cover crime throughout the state.

"For an activity that involves so much cruelty, it is unacceptable that RSPCA inspectors are not allowed onto the wetlands to prosecute duck shooters for cruelty.

"Yet, even before first light, it is volunteer Coalition Against Duck Shooting rescuers who are on the wetlands with duck shooters to rescue wounded birds and recover illegally shot protected and threatened species, despite facing disproportionate fines of \$933 for entering the water before 10am. In 2017, our rescuers recovered 296 protected waterbirds, including 183 threatened Freckled and Blue-billed Ducks, from just one wetland, the Koorangie Marshes. Yet to our knowledge, the GMA officers didn't recover a single bird at that wetland.

"Until duck shooting is banned, the Chairperson of GMA, Brian Hine, a long-standing duck shooter with a serious conflict of interest, should be replaced by a non-shooting chairperson. In fact, board members and GMA office holders who are duck shooters should also be forced to relinquish their jobs for the same reason.

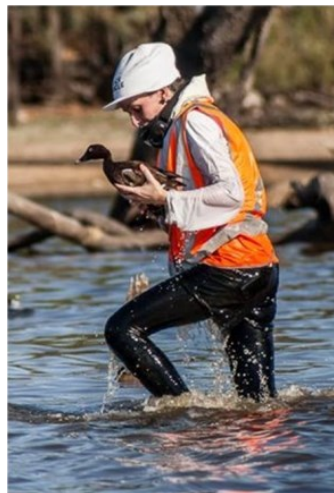
Duck Shooting Season 2018 cont.

“If Agriculture Minister Jaala Pulford and Environment Minister Lily D’Ambrosio are serious about stopping the illegal shooting of threatened species, all they have to do, until duck shooting is banned, is close all wetlands with threatened species to shooting. It’s that simple,” Levy said.

“Following the illegal shooting of so many threatened native waterbirds in 2017, the government called for a review of the GMA. This was conducted by Canberra based consultancy firm, Pegasus Economics. We believe the report is damning. However, not surprisingly, the GMA is yet to release the report to the media and the public. Surely it should have been released publicly before the 2018 duck shooting season was announced.

“Rescuers will continue to help native waterbirds on the wetlands and expose the illegal shooting of threatened and protected species, until the recreational shooting of native waterbirds is banned,” Levy concluded.

For further information contact:
Laurie Levy, Mobile: 0418 392 826



Last year at The Mashies near Kerang, as rescuers rushed hundreds of wounded birds to the mobile veterinary clinic, volunteer veterinarians worked frantically to keep up with the hectic pace.



November 2017 Committee Report

Committee business

We have been discussing our general meeting arrangements and will now have a Committee member at the door to welcome members and guests. A range of correspondence and BCC documents have been displayed on a table near the door for you to read before or after the meeting. You have probably noticed that for the past few months we’ve had the meeting in the main part of the Hall instead of the smaller room. Let us know if you like these changes and if you have other ideas for our meeting set-up.

Membership

The Committee has approved two new membership applications for Robert & J Ives; and for Robert Stringer.

Planting and weeding activities

We had our last planting for the year in October and will now take a break during the hottest months. The latest edition of the Banyule Banner has a wonderful aerial photo of Banyule Flats and it is rewarding to see how much difference re-vegetation work by WCS, BCC and community groups has achieved since WCS was established in 1970. See the photo from the 1960s, prior to re-vegetation.



End of Year bus excursion

Heather has planned an interesting day out for us at the wetlands under the Westgate Bridge.

North East Link

On the 18th October we sent letters expressing our concerns to 21 State upper and lower house members of Parliament. Together with FOB we are printing some more ‘No freeway’ signs which will be available for \$10. Daphne has written a letter to the editor of the Leader.

Our first protest photo wasn’t published in the Heidelberg Leader, but surprised us when it appeared in the Herald Sun on 16th October. Another drilling rig has appeared at the native

November 2017 Committee Report cont.

gardens. We will be gathering this Saturday at 2.00 for another photo and hope to have a much larger gathering. We have prepared our own version of the Corridor A scorecard. Contact Dianne if you would like to use some of these critiques in your own correspondence.

Commercial use of Banyule House

The owners of Banyule Homestead have lodged an appeal with VCAT after their planning application was refused by BCC. WCS, FOB and several individual Society members are involved in the appeal. The compulsory conference on 30 October did not result in a negotiated resolution. The hearing is currently planned for 18-22 December and may need to continue for further days in March.

Submissions on Environmental issues

We have been very busy making submissions on behalf of the Society:

BCC State of the Environment Reports 2015-6, 2016-7: a statement was made on behalf of WCS at the Council meeting on 30 October.

Draft BCC Public Toilet Plan: e supported the proposals to build new toilet facilities at Banyule Flats, Warringal Parklands and Rosanna Parklands, to be situated close to the trails and open during the day. We recommended safety considerations, minimisation of construction impact, and for Friends groups to be consulted about location and landscaping.

Banyule Shared Paths Project: a statement was made on behalf of WCS at the Council meeting on 30 October. Council voted to delay the construction of the Banyule Flats pathways and to allow further discussion with the Wurundjeri Land Council, reconsider the design and location of the pathways and seek additional funding, because of the discovery of indigenous artefacts.

Reports on other Committee activities

Northern Metropolitan Partnerships. Michelle and Dianne participated in this event, aimed to identify development initiatives for the region. We were able

to comment on a variety of priorities including environment, transport and health.

Re-filling Bolin Bolin Billabong. Doug, Dennis, Michelle, Celia and Dianne were honoured to be guests of the Wurundjeri council at the ceremony to release water into the Billabong. This is the result of a water harvesting project of Melbourne Water and the Manningham Council.

Victorian Environmental Friends Network. Daphne and Dianne attended on behalf of WCS, and Dennis and Michelle represented FOB at this awards and networking event.

Melbourne Water's Yarra Catchment Goals and Strategy development. Daphne and Dianne participated in a workshop in Montrose on 10 October, and Dianne subsequently joined a Yarra Goals Working Group. John Milkins and Andrew Kelly are also members of this Group. If you are interested you can attend the Yarra Catchment Collaborations: Workshop 2 on Wednesday 29 November, 9.30am - 3.30pm at Alphington. Registrations essential via the Melbourne Water website.

Of interest

Single-use lightweight plastic bags will soon be banned across Victoria. The Andrews government has committed to outlawing plastic bags following the lead of supermarket giants Coles and Woolworths who announced their own bans earlier this year. The Government will hold a three-month consultation process with businesses and the community on how to implement the ban. Balloons have been banned from Banyule events. This is another issue on which WCS has lobbied Government. Both these bans are very welcome to reduce the amount of litter in waterways and subsequent harm to wildlife.

The Banyule Calendar for 2018 will feature 12 of Banyule's Significant trees and Leanne Cole has been commissioned to provide the photographs.

Celia Smith (WCS Committee Member)

The North East Link and the endangered Matted Flax-lily

The recently released North East Link Environment Protection and Biodiversity Conservation Act Referral provides details of the project's environmental impact. Surveys indicate that the Simpson Army Barracks contains one of the largest known population of the endangered Matted Flax-lily, with habitat containing 84 lilies to be lost to a

road trench that will accommodate the northern above ground section of the North East link.

The North East Link Authority are proposing to move these lilies to an as yet undetermined site. Moving affected plants does not address the habitat loss that is one of the main reasons this species is

The North East Link and the endangered Matted Flax-lily cont.

endangered.

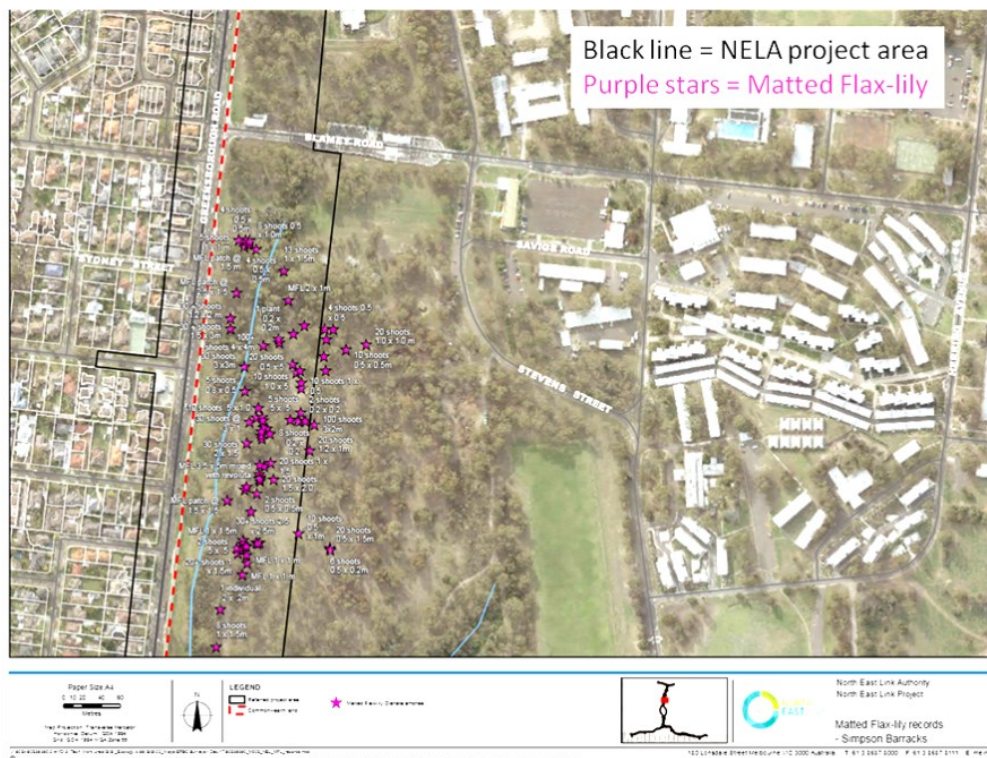
The 2010 National recovery plan for the Matted Flax-lily provides the following summary:

“The Matted Flax-lily (*Dianella amoena*) is a small, perennial, tufted lily endemic to Victoria, where it is distributed from the south-west to the east of the State, occurring in grassland and grassy woodland habitats. Much of this habitat has been cleared, and remaining populations of Matted Flax-lily are mostly small and highly fragmented. Current threats include ongoing clearing of habitat and weed invasion.

There are estimated to be only about 1,400 plants remaining in about 120 locations. The Matted Flax-lily is listed as Endangered under the Commonwealth *Environment Protection and Biodiversity Conservation Act 1999*. ”

WCS members can hear more about the Matted Flax-lily and NELA processes for environmental assessment and protection at our special meeting on 15th Feb (see pg 2 of this newsletter).

James Deane



Left: NELA map (EPBC report) showing Matted Flax-lily in the project area in Simpson Barracks alongside Greensborough Rd.

Above: Matted Flax-lily.

Nature Notes November 2017

Penny Grose – Marbled Gecko in meter box

Gianna Romano – Sacred Kingfisher near Rosanna Golf Course

James, William, Robert and Gianna - 2 Echidnas and 2 Tiger snakes

Lene Kuhl Jakobsen– neighbour saw a snake at Possum Hollow playground

Jane Crone - Galah, Indian Ringneck parakeets (escapees), Tawny Frogmouths at Eyrie, Black Duck, Galahs, Sulphur Crested Cockatoos,

Anthea Fleming – Bristly, bronze beetle larvae, one eaten by Bull ant, 4 Snake Neck turtles on log at Banyule swamp, Cockatoo eating pine cone, Scarlet Honey eater (brown female) Latrobe wildlife sanctuary, Spotted Pardalote,

Dianne Williamson – Fox with 3 cubs in kangaroo paddock at Banuyle Flats, Boobook owl

Daphne Hards – Little Wattle Bird that visits each summer

Doug McNaughton – Tawny Frogmouth

Nature Notes December 2017

John D'Aloia – Sulphur Crested Cockatoos eating wattle seed at house, also ate railing on deck

Anthea Fleming – Blue Tongue basking on back path prior to giving birth to live young, Common Brown male and female butterflies, Lang Lang – Flying Duck orchid on sandhill overgrow with Stringy Bark and Box, Pardalote, Trigger plant, and an Emu, case moth on lemon/lime geranium

Heather Smith – Kew Boat House – Noisy Miners hassling a Darter, Wombat with baby crossing Beverley Rd

Celia Smith – at least 70 long-billed Corella

Dianne Williamson – Banyule Billabong – Fox, Grey Shrike-thrush singing in garden at house

Daphne Hards – Birdlife walk in Bullen Park/Bolin Bolin – 7-8 Scarlet Honey Eaters

Jane Crone – Young Butcher bird

James Deane - A Stinkhorn fungus fruiting body at Westgate Park during end of year excursion (see picture below)



**Would you like to receive your newsletter by email rather
than a paper copy in the regular mail**

Save paper and see the photos in colour. Contact us at
warringal3084@gmail.com

If not delivered return to: PO Box 64, Rosanna 3084



**WARRINGAL
CONSERVATION
SOCIETY**

Registered by Australia Post

Publication No: 100005201

PRINT

POST